

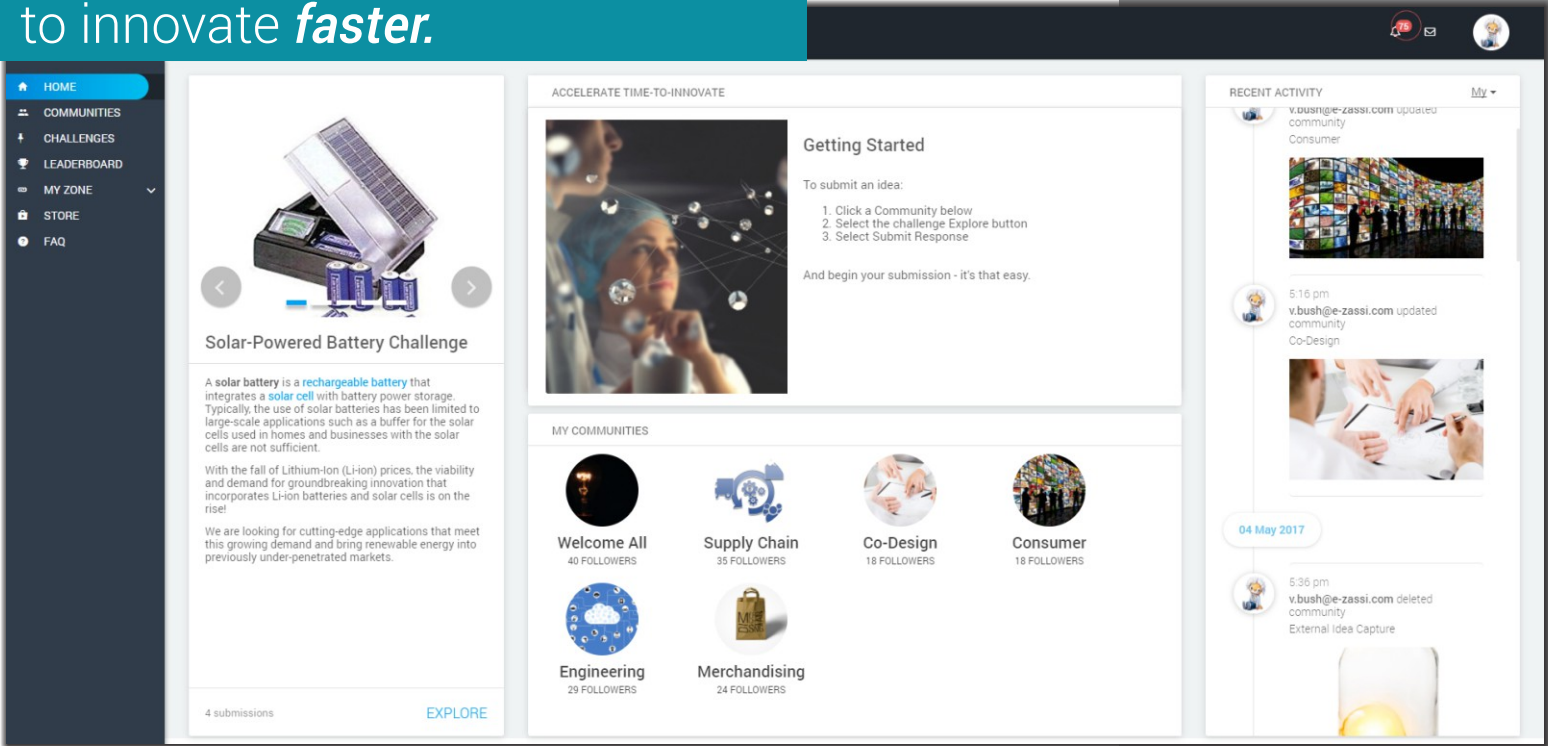


Enterprise Innovation Management Technology
Accelerate Your Time-to-Innovate

Navigating the innovation world, discovering new, disruptive technologies using advanced technology.

www.ezassi.com

One smart solution...
to innovate *faster*.

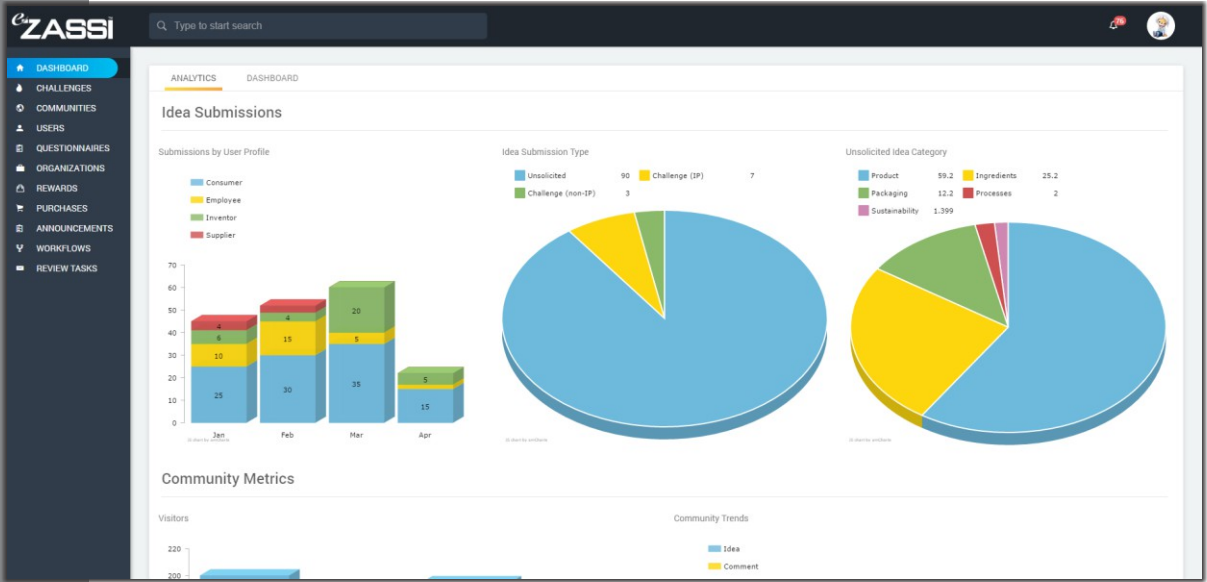
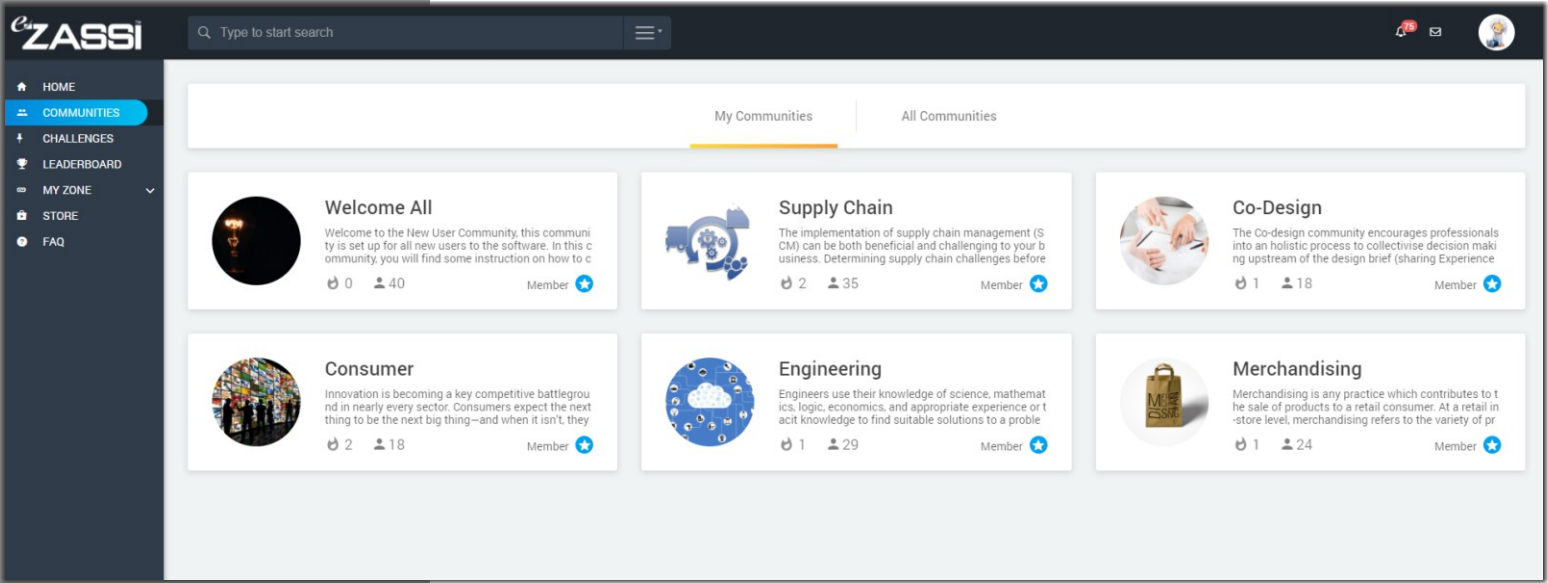


Key Features

- Internal and external idea capture
- Unlimited users
- Unlimited challenges
- Unlimited communities and networks
- Network and crowdsourcing management
- Idea capture with bilateral IP protection
- Idea submission auto scoring
- Robust workflow builder
- Time stamped workflow advancement history
- Automated emails
- Alerts and notifications
- Unbranded/confidential challenge solution
- Advanced auto profiling

- Social sign-on
- Dynamic idea dashboard grid
- Progressive analytics
- Idea rating
- Idea collaboration
- Community leaderboard
- Rewards and point gamification
- Custom-tailored online store
- Advanced search technology
- Cyber/tech scouting
- Demand generation

Evolving how businesses scout, manage, sustain, engage
and innovate through industry-leading technology.



Progressive Analytics

- Essential analytics
- Customized analytics
- Drill-down, interactive charts and graphs

Robust Workflow Builder

- Unlimited workflows
- Unlimited reviewers
- Intuitive client admin user interface
- Detailed task assignment
- Automated workflow or drop down stage-gate selection
- Fully documented collaboration stream
- Ability to upload any document or file type
- Auto alerts and notification
- Automated email
- Email reviewers with one click
- On-the-fly customization

DASHBOARD
 CHALLENGES
 COMMUNITIES
 USERS
 QUESTIONNAIRES
 ORGANIZATIONS
 REWARDS
 PURCHASES
 ANNOUNCEMENTS
 WORKFLOWS
 REVIEW TASKS

WORKFLOWS

	Name	Description
	<input type="text" value="Name"/>	<input type="text" value="Description"/>
	Idea Review/PLM	
	Idea Review/PLM II	

EDIT WORKFLOW

Name

Description

	Present ...	Present Task	Owners	Type	Descripti...	Condition	Next Tas...	Object Status
	0	START		START			1	New
	1	Determine New Idea Status	Adam Allred, Virginia Bush	REVIEW	Determine N...	REJECT	-1	Rejected
	1	Determine New Idea Status	Adam Allred, Virginia Bush	REVIEW	Determine N...	APPROVE	2	Propose to Stage...
	2	Stage A Review	Ashley Jackson, Virginia B...	DO	Confirm Sta...	COMPLETE	3	Stage A
	3	Stage B Review	Ben Rouge, Virginia Bush	DO	Confirm Sta...	COMPLETE	5	Stage B
	4	Propose to Close Idea	Adam Allred, Virginia Bush	DO	Confirm Ide...	COMPLETE	-1	Closed
	5	Idea Advancement Review	Brian Bortle, Virginia Bush	REVIEW	Confirm Ide...	APPROVE	6	Awaiting Project ...
	5	Idea Advancement Review	Brian Bortle, Virginia Bush	REVIEW	Confirm Ide...	REJECT	4	Move to Close
	6	Move to Project Definition	Ashley Jackson, Virginia B...	DO	This idea is ...	COMPLETE	7	Project Definition
	7	Define Production Positioning	Ashley Jackson, Virginia B...	DO	Provide pro...	COMPLETE	8	Product Positioni...
		Identify products	Ben Rouge, Virginia Bush	DO	Identify Pro...	COMPLETE	9	Product Identifica...

Owner

Taylor Slow ✓

Teresa Arthur ✓

Tiffany Blue ✓

Tim Smith ✓

Tony Stork ✓

Virginia Bush ✓

CANCEL

SUBMIT

The screenshot displays the ZASSI Workflow Timeline interface. On the left is a dark sidebar with navigation links: DASHBOARD, CHALLENGES, COMMUNITIES, USERS, QUESTIONNAIRES, ORGANIZATIONS, REWARDS, PURCHASES, ANNOUNCEMENTS, WORKFLOWS, and REVIEW TASKS. The main area shows a vertical timeline titled 'WORKFLOW TIMELINE' with a close button (X) in the top right. The timeline consists of a central vertical line with circular markers and diamond-shaped decision points. Tasks are shown in rectangular boxes connected to the timeline. Each task includes a title, a description, a status (e.g., 'Closed by Virginia Bush'), and a date/time stamp (e.g., '06 May 8:11 PM'). Action buttons like 'DO' and 'REVIEW' are also present. The background is a blurred view of a table with columns 'WORKFLOW TASK' and 'RATING'.

WORKFLOW TASK	RATING
Determine New Idea Status	4
Move to Project Establish...	3
Determine New Idea Sta...	5
Determine New Idea Sta...	
Eliminary P&L	21
Identify Products	4
Accepted Review	4
Used	19
Determine New Idea Sta...	6
Determine New Idea Sta...	3
Determine New Idea Sta...	2
Determine New Idea Sta...	7

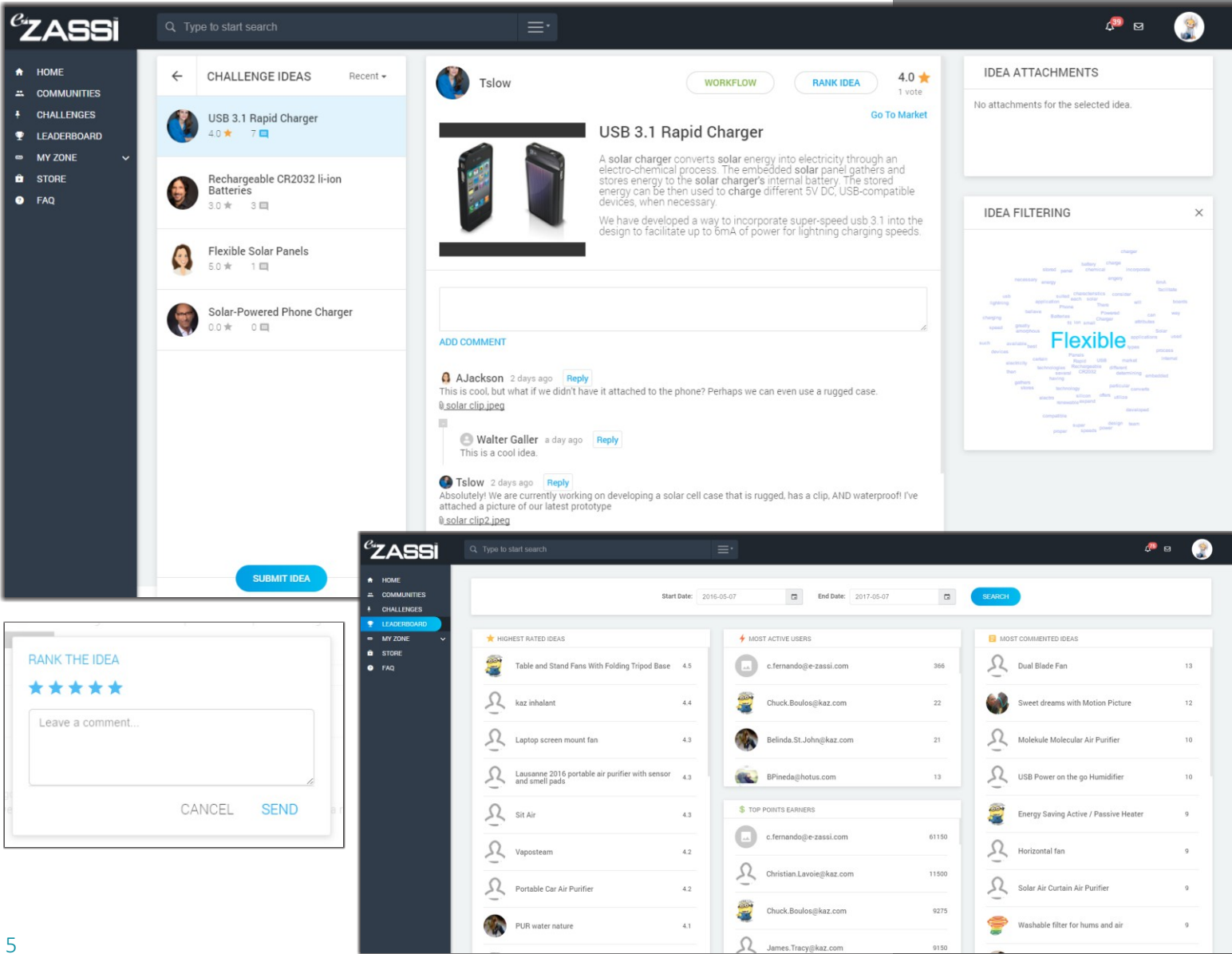
Stage-Gate Workflow

- At-a-glance status workflow
- Real-time display
- Complete, time-stamped history
- Detail click-through
- Review uploads and collaboration stream



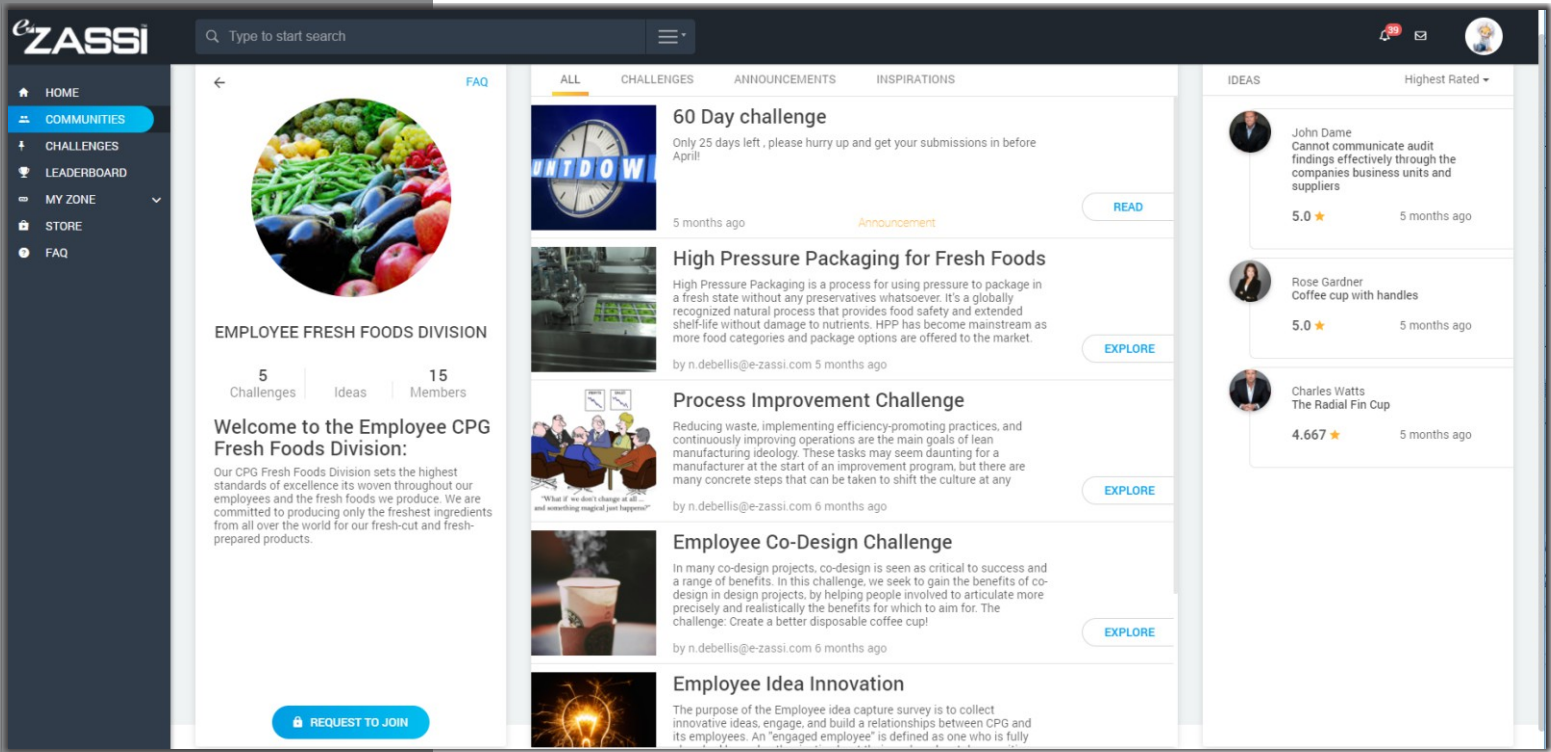
Ideation and Collaboration

- Unlimited users
- Submit ideas
- Rate other's ideas
- Comment on ideas
- Earn points
- Redeem rewards
- Store and store items
- Gamification leaderboard



Community and Networking

- Community, network and global announcements
- Unlimited communities
- Network segmenting
- Request to join open communities or networks
- Configurable for auto access or admin approval to join
- Share communities and challenges internally and externally
- Connect with other community members





6816 Southpoint Parkway
Jacksonville, FL 32216 USA

Phone: 904.432.8315
Email: info@e-zassi.com



EzassiTM



@EzassiTM



ezassi

www.ezassi.com